



# OUTDOOR RECREATION MASTER PLAN

## PUBLIC INVOLVEMENT AND FEASIBILITY STUDY

**Town of Wiley, CO**

July 31, 2023



**PLAN PREPARED FOR:**



**WILEY, CO**

**PLAN PREPARED BY:**

**AYRES**

3665 JFK Parkway, Building 2, Suite 100  
Fort Collins, CO 80525  
970.223.5556  
[www.ayresassociates.com](http://www.ayresassociates.com)

A landscape photograph featuring a dense forest of bare, grey trees in the foreground and middle ground. The ground is covered with dry, yellowish-brown grass and patches of light-colored soil. In the upper left, a tall, thin metal tower is visible against a clear blue sky with a single white contrail streaking across it.

People who cannot find time for recreation are obliged sooner  
or later to find time for illness.

**John Wanamaker**

# ACKNOWLEDGMENTS

---

## STAKEHOLDER ADVISORY COMMITTEE

### Town Council

- Allen Campbell, Mayor
- Dale Stewart, Mayor Pro Tem/Trustee
- Larry Coen, Trustee
- Sandy Coen, Trustee
- J W Wilks, Trustee
- Julie Esgar, Trustee
- Prudy Osborn, Trustee
- Debbie Dillon, Town Clerk
- Clint Jones, Town Superintendent

### Wiley School District

- Erin Brophy, Superintendent

### Community Partners

- Cheryl Sanchez, PEP Director
- Wiley Lions Club
- Wiley Methodist Church

## TOWN OF WILEY

### Staff

- Debbie Dillon, Town Clerk
- Clint Jones, Town Superintendent

### Grant Specialist

- Lisa Schlotterhausen, Facilitator/Grant Writer

## CONSULTANTS

### Ayres Associates

- David Land, Project Manager/Landscape Architect
- Craig Stoffel, Project Manager/Landscape Architect
- Josh Olhava, AICP, Senior Community Planner

*\*All images were taken by the consultant team unless otherwise noted.*

**Funding provided by: GOCO - GREAT OUTDOORS COLORADO**

# TABLE OF CONTENTS

---

## INTRODUCTION

Executive Summary .....	8
Purpose of this Document .....	9

## EXISTING CONDITIONS

Site Analysis .....	12-13
Existing Sidewalks .....	14-15

## COMMUNITY ENGAGEMENT

Kick-off Meetings .....	20-21
Visioning Workshop Public Open House .....	22-23
Follow-Up Workshop Public Open House .....	24-25
Major Themes & Overall Takeaways .....	26-27

## RECOMMENDATIONS

H.V. Smith Park Improvements .....	32-33
Main Street Park Improvements .....	34-35
Sidewalk and Trail Improvements .....	36-37
Community Recreation at the School Campus .....	38-39
Outdoor Recreation / Event Center .....	40-41

## FUNDING STRATEGIES

Grant Options .....	45
---------------------	----

## NEXT STEPS

Additional Planning Recommendations/Studies .....	49
---	----

*This page intentionally left blank.*



SECTION

01

# INTRODUCTION



# EXECUTIVE SUMMARY

---

The Town of Wiley and its partners have embarked on an important journey to improve the health and wellness of their citizens and to enhance the overall quality of life and vitality of the community through increased access to recreation opportunities for all ages and abilities.

Health, wellness, and recreation are important elements of any thriving community, and the Town has made this recreation master plan a focus and priority based on several factors that have been observed. Per the 2019 census the town has a population of 437, up 27 from the 2010 census. The percentage of folks over the age of 62 has increased during that time. Additionally, the town has just two small parks and a fragmented system of sidewalks and pathways. Most of the walkways that are in place are poorly lit, in a state of disrepair and do not meet ADA and basic accessibility requirements. Many walks are, in fact, a safety hazard for residents and most are not usable by individuals with mobility limitations. Nearly all these pathways are under 4' wide and are not ideal for walking with family and friends. This often results in groups walking in the streets.

And while the percentage of the town under 18 has declined from 2010 to 2019, it is anticipated that, over time, more families may be moving to the town to take advantage of the strong school system in Wiley. To meet this need, and to provide higher quality housing, the town is embarking on a housing development project at the southeastern side of the community. This new housing has accelerated the need for a plan that identifies and addresses community connectivity and outdoor recreation opportunities.

The master plan presented here provides community-based concepts, opportunities, and vision for expanding access to all aspects of outdoor recreation for all ages and abilities. Safe pedestrian & bicycle transportation, improved playgrounds, and school athletic facilities are all major factors for families deciding where to raise their children. They also provide added quality of life to the senior community, giving them spaces to thrive and increase their overall health and connection to others in the Town.

This Outdoor Recreation Master Plan provides analysis, goals, recommendations, funding opportunities and potential partnerships for strategic, incremental steps creating a variety of recreation opportunities for the community. Wiley is uniquely poised to enjoy big wins from small investments, with much of the existing parks and recreation infrastructure providing a foundation that will benefit from investments and improvements.



# PURPOSE OF THIS DOCUMENT

---

The purpose of this Outdoor Recreation Master Plan is to provide a comprehensive, high-level assessment and guiding vision for increasing access to and improving the quality of recreation in Wiley.

The three primary areas of consideration of this study are:

- Sidewalks and Pathways
- Parks and Open Space
- School Recreation Resources

This plan considers recreation through a variety of activities, from its simplest form of walk-ability to more regionally contextual activities associated with the ranching and agriculture-based economy.

As outlined further in this document, this recreation master plan is informed from extensive public engagement and input gathered from citizens and community leaders, gained through multiple events and surveys conducted in Wiley. The design team also spent considerable time in the field, exploring the open space edges of town, walking the streets to gain pedestrian perspective, as well as an in-depth tour of the school campus with the school leadership and facility management. That said, please note that the scope of this report did not include a full, detailed engineering assessment of the public sidewalk system. This level of review and assessment will require additional time as well as field or geo-spatial survey collection to document existing topography and conditions. A full sidewalk survey, analysis and detailed cataloging of ADA issues and concerns is recommended and is discussed further in this document. This report highlights the general areas of concern and begins to define the extent of the issues so that a reasonable scope for this effort can be established.

This document is intended to frame the existing recreation conditions in the community, engage citizens to identify future needs and desires for recreation, and outline preliminary feasibility for several key areas of improvement. This information should provide a complete overview of the issues at a high-level and with enough information to describe the problem and potential solutions to funding sources and the community. There are some easy to implement “quick-wins” provided here as well as some more aspirational visions that should provide the community good food-for-thought towards next steps and prioritization.

Additionally, this plan also considered future expansion of recreation opportunities, that not only support the community but have potential to draw regional visitors, driving local economic growth to sustain and help offset the costs to maintain the proposed facilities. Outdoor recreation is a billion-dollar business in Colorado and should be considered as part of a larger comprehensive plan and economic development strategy for the community. For more information on the connection between recreation and economics please visit The Colorado Department of Economic Development: <https://choosecolorado.com/key-industries/outdoor-recreation/>

It has been great to see the diversity of stakeholders show up for this community discussion and it is our team’s sincere hope is that these efforts serve as just the beginning of the dialogue around recreation and wellness in the community.

*This page intentionally left blank.*



SECTION  
**02**

# EXISTING CONDITIONS

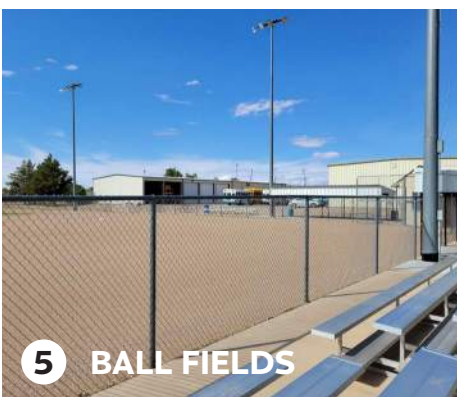
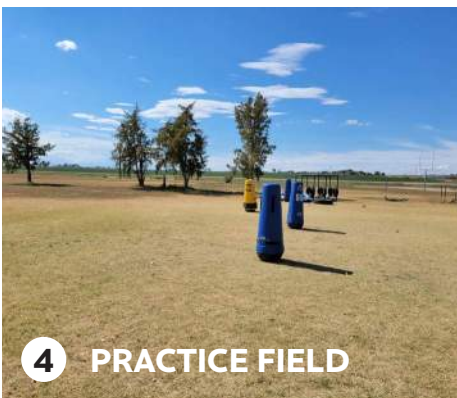
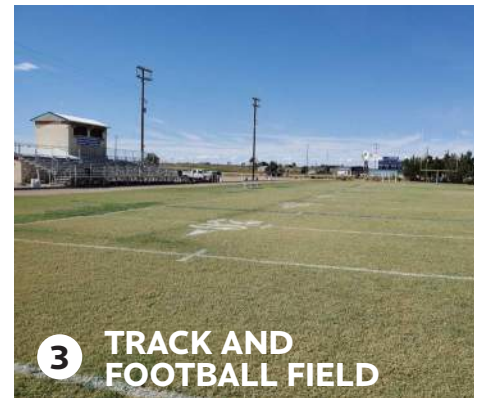


# SITE ANALYSIS



Figure 2.1 - Site Analysis

# SITE ANALYSIS



# EXISTING SIDEWALKS

While exploring town it quickly becomes apparent that adequate sidewalks are lacking on most residential streets. This was reiterated by the community at multiple open house meetings. There are also other challenges with some of the existing walkaways, including lack of curb ramps at intersections, and drainage swale crossings. Narrow widths also deter use by not accommodating side-by-side walking and passing on-comers safely and easily.

This plan does not undertake a comprehensive sidewalk inventory and assessment plan. We have taken efforts to begin to identify general conditions, so that this plan can identify and help prioritize routes and critical linkages to important community centers and destinations. The proposed preliminary sidewalk and trails plan was informed by conversations with community members and presented at the Follow Up workshop to ensure their input was incorporated.





*This page intentionally left blank.*



SECTION  
**03**

# COMMUNITY ENGAGEMENT

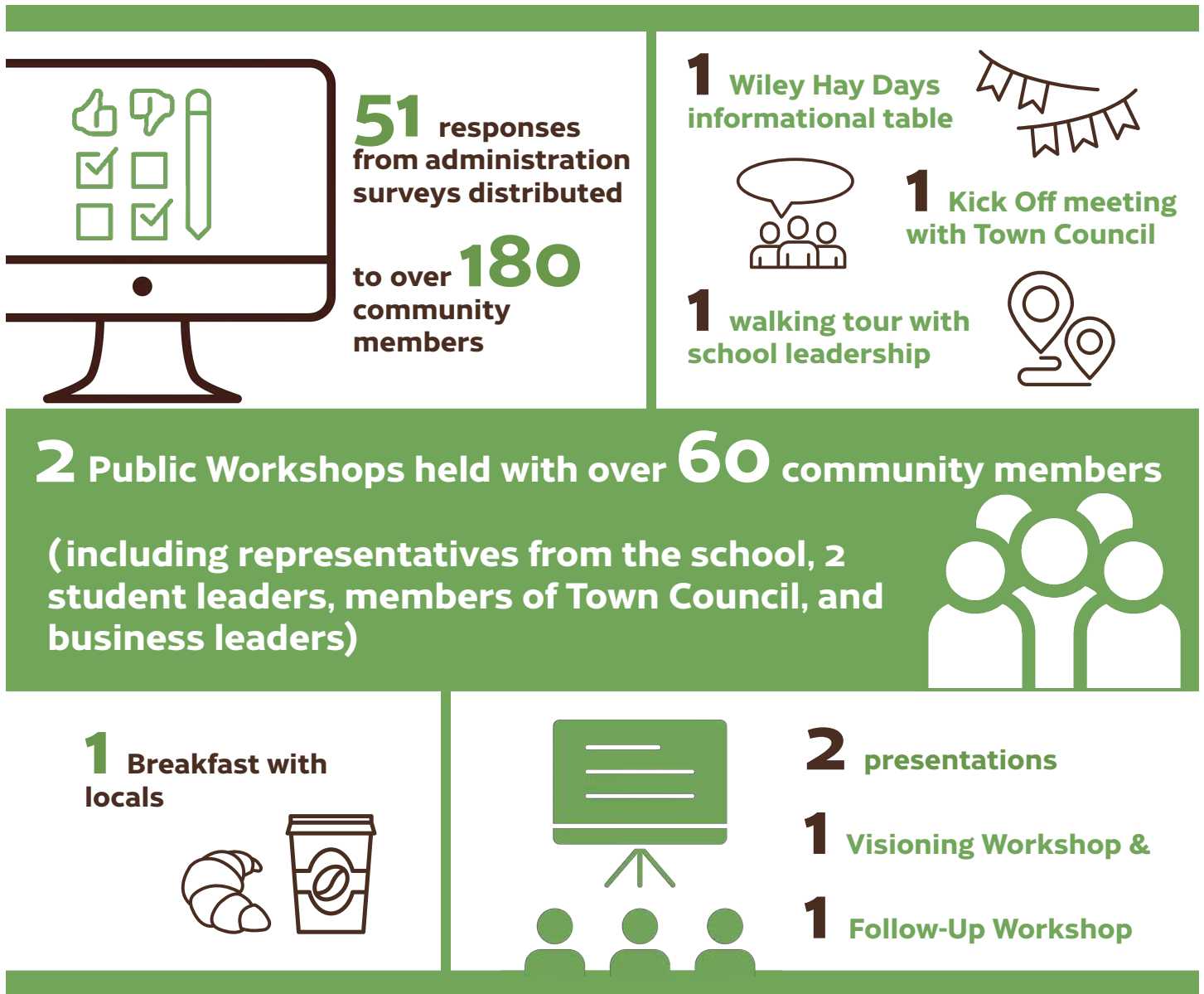


*This page intentionally left blank.*

---

# COMMUNITY ENGAGEMENT BY THE NUMBERS

The below and following pages in the section of the report provide a summary of the public engagement process conducted for this report. More detailed record of these engagements are available and can be provided by the town of Wiley upon request.



# KICK-OFF MEETINGS

On August 17, 2022, a virtual meeting was held with the Town of Wiley clerk and the project grant writer to kick-off the project. The meeting objectives were to:

- Identify project stakeholders, such as Town Council and Wiley School District
- Discuss methods and locations of pertinent research for this project
- Establish next steps and action items to complete for the next meeting

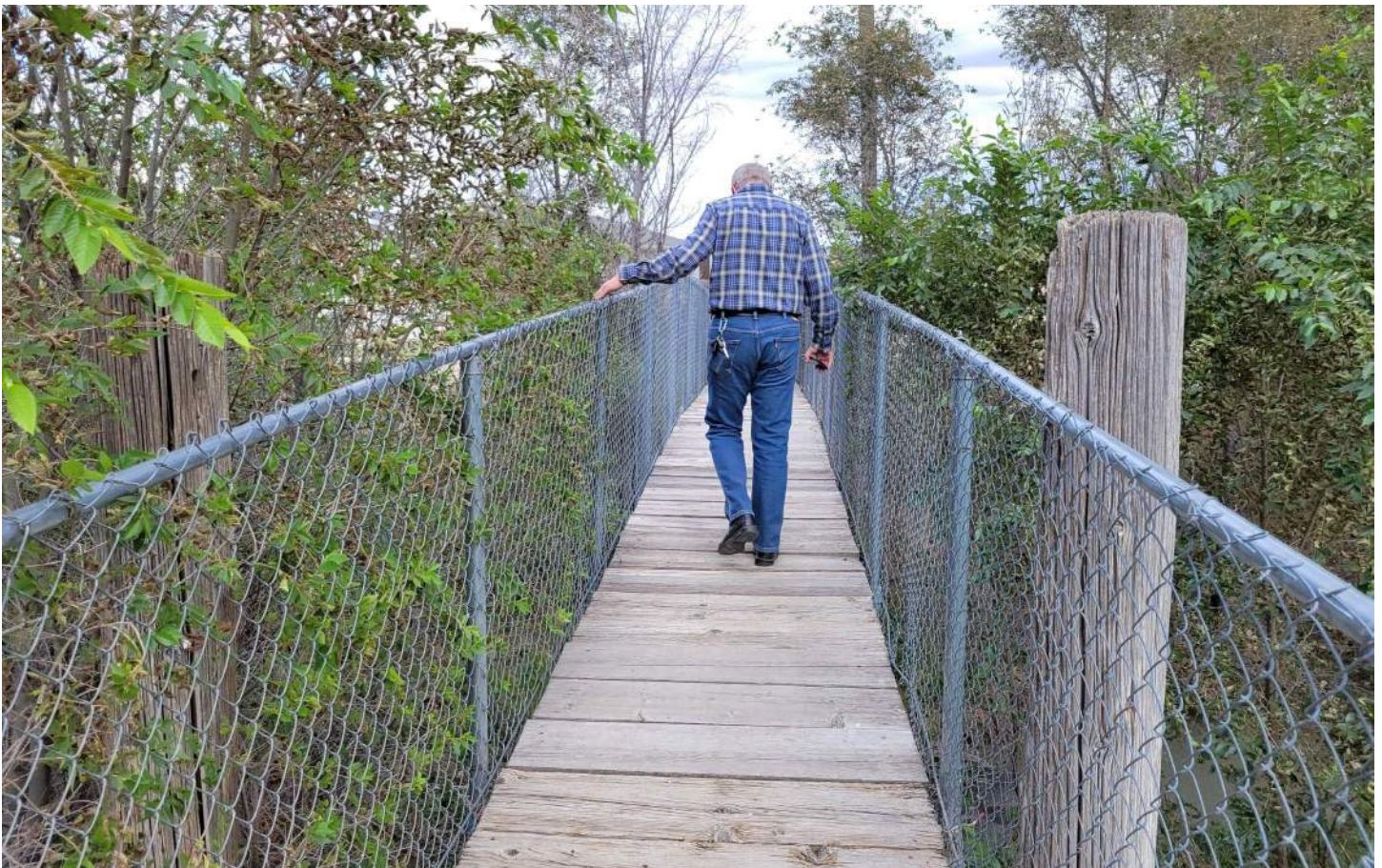
The next virtual meeting on August 24, 2022 consisted of the same people, to better prepare for Ayres on-site meetings in the future. The meeting objectives were to:

- Discuss existing community surveys
- Establish a milestone schedule
- Create action items for the next identified meeting, such as creating workshop materials and coordinating with the stakeholder group

On October 3, 2022, the last of the kick-off meetings, the Ayres Team traveled to Wiley to perform an in-person site visit. This meeting allowed the team to meet with the Town Council, and get to know the community better. The meeting objectives were to:

- Develop project scope and goals / objectives
- Develop public engagement strategies
- Establish next steps

These series of meetings with various community members of Wiley helped Ayres understand the project needs, establish a design process, and connect with the community.





# VISIONING WORKSHOP



The Town of Wiley and Ayres Associates held a public open house and listening session on December 15, 2022 from 4:00pm to 8:00pm at the Wiley School Library to connect with students, local business owners, community leaders, town staff, and all residents regarding the Outdoor Recreation Master Plan process.

There were approximately 30 community members in attendance at the event. The group participated in meeting activities such as:

## 1. Welcome Station: Greeting and Orientation

*Purpose:* Inform the community about the project and the process. Log meeting attendance and contact information.

## 2. How do you recreate in Wiley?

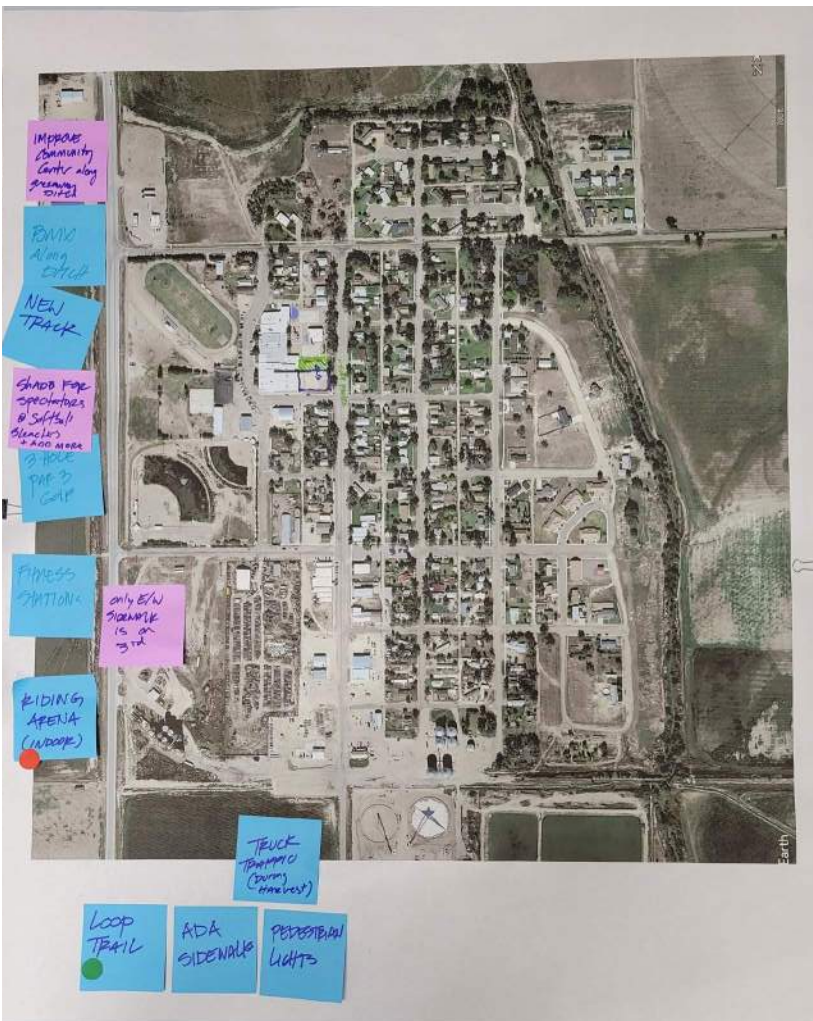
*Purpose:* Allow attendees to place dot stickers and post-it notes on boards of activities they participate in most.

## 3. Where do you recreate in Wiley?

*Purpose:* Allow attendees to mark on maps of the community which locations and routes they went to most.

## 4. Five-Minute Master Plan

*Purpose:* Allow attendees to draw their ideal recreational improvements on a map of the community.



The engagement activities identified the existing spaces that community members use to recreate and stay healthy. They are as follows:

**Parks:**

- Main Street Park
- H. V. Smith Park

**School:**

- Football Field
- Track
- Practice Field
- Basketball/Tennis Courts
- Softball and Baseball Fields
- Playgrounds
- Weight Room

The community is looking to improve these existing sites and add more parks to their town! Some ideas they had included:

- Rodeo/Riding Event Space
- Pickleball Courts
- Disc Golf Course
- Splash Pad
- Skate Park
- Dog Park

The next morning, on December 16, the Ayres team met with 6 members of the community at the Cornerstone Cafe for breakfast and additional conversation about the Outdoor Recreation Master Plan.



# FOLLOW-UP WORKSHOP

The Town of Wiley and Ayres Associates held a public open house and follow-up meeting on Tuesday, March 28, 2023 from 5:00pm to 8:00pm at the Wiley School to connect with students, local business owners, community leaders, town staff, and all residents regarding the Outdoor Recreation Master Plan process. The objectives were to review the major themes and takeaways from the previous meeting and provide additional opportunity for the community to share ideas and provide feedback.

There were approximately 35 community members in attendance at this event, many of which did not attend the previous one. The group participated in meeting activities such as:

## 1. Welcome Station: Greeting and Orientation

*Purpose:* Inform the community about the project and the process. Log meeting attendance and contact information.

## 2. How do you recreate in Wiley?

*Purpose:* Allow attendees to place dot stickers and post-it notes on boards of activities they participate in most. These boards were similar to the ones used in the previous workshop, just to reinforce the ideas and preferences of the community.

## 3. Comments and Major Themes: "What We've Heard So Far"

*Purpose:* Allow attendees to validate the ideas and concepts that the Ayres team captured from the previous workshop by placing pins and post-it notes on a summary board.

## 4. Preliminary Concepts

*Purpose:* Allow attendees to see their ideas come to life and evaluate priorities with high-level test-fit concept plans on boards. This helped facilitate discussions, identify additional opportunities, and confirm community support.





The follow-up workshop identified additional ideas and opportunities from the people who have missed the first meeting. Some additional ideas they had included:

- Bicycle recreation such as BMX or a pump track
- Additional playgrounds / adventure play
- Increasing the size of the track and field to include soccer
- Adding a trail loop to the town

The meeting concluded with the Ayres team in better understanding of the community's needs and next steps to formulating final deliverables for the town.



# OVERALL TAKEAWAYS



## WALKING AND JOGGING

- Provide a safe place for walking dogs
- Provide a safe place to walk with children and strollers
- Provide a safe, level surface for elderly and people with injuries and disabilities
- Plant additional trees
- Update lighting to LED
- Provide safe routes to school campus, Main Street Park, and other common places in the community
- Improve street crossings and ADA ramps
- Increase sidewalk widths to 6 feet (5 feet minimum)
- Implement a soft surface regional trail loop following ditch grade with 8-10 foot width



## PARKS

- Improve existing parks
  - Activities for a larger range of ages (children and adults)
  - Restrooms
  - Shade, splash pads, or other ways to cool off in the summer
  - Adventure play
- Provide new parks so there is easy access from all parts of town:
  - Create a park to the southeast quadrant of town
  - Create a linear park with trail loop
- Improve H.V. Smith Park
  - Address ADA accessibility issues
  - Install picnic/shade shelter
  - Replace pedestrian bridge
  - Expand play equipment to accommodate larger age range
  - Install basketball court
  - Update lighting to LED
  - Provide splash pad
  - Plant additional trees
  - Install concrete loop path



## SCHOOL BASED RECREATION

- Weight room, playground, courts, and track used by many in the community
- Lots of people come to the school for recreation and wellness
- Develop 18-hole disc golf course
- Install new 8-lane regulation track
- Install new synthetic multi-use football/soccer field
- Install new practice field
- Formalize walking loop around perimeter of school property
- Install vegetated windbreak



## NEW IDEAS

- Disc golf
- Bicycle recreation such as BMX or pump track
- Outdoor volleyball
- Pickleball
- Splash pad
- Riding, rodeo, and events arena (like Mustang Pavilion and Education Center in Kim)

*This page intentionally left blank.*



SECTION  
**04**

# RECOMMENDATIONS



*This page intentionally left blank.*

---

# RECOMMENDATIONS

Expanding recreational opportunities throughout the Town of Wiley will take a variety of efforts and investments, both in existing and new infrastructure and amenities. Throughout the public engagement process, the community stressed the need for safe, walkable streets that were well-lit, and buffered from neighboring properties, with continuous accessibility and continuity.

The heart of the community is the school campus. The entire community, all ages, and makeups, take advantage of the school's cinder track for walking and running, as it is the best source for a safe and consistent surface to walk on in town. This includes the elderly and disabled folks, parents with strollers, and aspiring young athletes. The school has also made their weight room open and free to the public. The ball fields are also heavily used, increasing pressure on facility managers to keep ongoing maintenance and irrigation consistent to ensure the fields are playable. Improvements to the existing facilities, and ideas for new activities and additional sports are explored here. The commitment by the school to provide a recreational destination for all the citizens of Wiley is commendable.

The Town has two well-used parks, Main Street Park which is centrally located within the community and provides a great destination for family birthdays, and H.V. Smith Park, located at the northeast corner of Town, that provides playground equipment designed for children aged 5-12 years old. Both parks have benefited from past GOCO grants. There are some safety and accessibility issues identified and described in the subsequent Recommendation plans for both sites.

This plan also explores additional areas that have potential to provide recreation throughout Town. Walking trails that loop around the edge of town, possibly formalizing an existing dirt bike area into a programmed BMX course and taking inventory of existing Town-owned vacant parcels that could be developed into parks and playgrounds to serve the immediate surrounding residences.

The rough order of budget ranges listed for each scope element on the following pages provide a high-level order of magnitude cost for each improvement. Due to the comprehensive cross section of areas explored these costs were based on whatever base information available and will need to be explored in more detail as these projects come online. The intent of these ranges is to provide general ball park costs as discussion of prioritization continues. Additional information regarding budget assumptions is provided in the index.

## TOWN PRIORITIES:

The Town Board has identified the following recommendations as key priorities\*:

### Parks:

- New ADA Bathrooms
- ADA Parking
- Shade
- Trees
- Lighting (LED)
- Loop Path at Harold V. Smith Park

### Pedestrian Walkability:

- Improved Street Crossings
- Trees
- Lighting
- Sidewalks

\*The Board supports all the proposed recommendations in this report; the priorities are identified to serve as a guide for initial efforts. Future efforts will focus on the remaining recommendations outlined in this report.



# H.V. SMITH PARK

## Existing Conditions:

### Existing Program:

- Playground
- Parking
- Horseshoes
- Picnic tables
- Fitness stations

### Observations:

- Playground surfacing not compliant with safety code requirements
- Play equipment use zones appear less than required (i.e. 9 ft clear from bottom of slides area needed)
- Majority of trees are very mature, several have been cut/removed
- Site lacks accessibility (parking, ramps, walkways, connections to picnic tables, etc.)

## Recommendations:

### Accessibility Improvements:

- ADA parking..... \$3,000 - \$5,000
- ADA restrooms (port-o-lets)..... \$8,000 - \$12,000
- Play structure modifications..... \$5,000 - \$10,000

### Safety Improvements:

- Playground surfacing improvements..... \$50,000 - \$65,000 (4,500 SF EWF)
- Lighting upgrades (LED fixtures)..... \$4,000 - \$9,000
- Expand play area 9 feet at slides..... \$1,000 - \$2,000

### Operational Improvements:

- Perform an irrigation audit to check efficiency..... \$500 - \$1,500
- Develop a tree canopy/shade plan to replace trees that are nearing the end of their life span (5-10 trees)..... \$5,000 - \$9,000

### Proposed Additional Program:

- New fitness stations..... \$50,000 - \$75,000
- Drinking water..... \$4,000 - \$8,000
- Shade shelter..... \$25,000 - \$45,000
- Splash pad..... \$100,000 - \$200,000
- Ninja warrior course..... \$125,000 - \$200,000
- Basketball court..... \$45,000 - \$60,000
- Replace pedestrian bridge..... \$85,000 - \$150,000

\* For use in funding, prioritization, and budget considerations





# MAIN STREET PARK

Existing Conditions:	Recommendations:	Rough Order Budget Range*
----------------------	------------------	---------------------------

**Existing Program:**

- Playground
- Street Parking
- Picnic areas
- Large Shelter
- Restroom

**Observations:**

- Playground surfacing not compliant with safety code requirements
- Play equipment nearing end of life
- Swing set lacks safe surfacing
- Existing restroom facility needs repairs or replacement

**Accessibility Improvements:**

- ADA parking.....\$2,500 - \$4,000
- ADA restrooms
  - ADA compliant port-o-lets.....\$10,000
  - or
  - ADA compliant bathroom replacement.....\$175,000 - \$250,000

**Safety Improvements:**

- Playground surfacing improvements..... \$35,000 - \$50,000
  - 3,500 SF engineered wood fiber (EWF)
- Lighting upgrades (pedestrian light poles & LED fixtures).....\$6,000 - \$12,000
- New play equipment.....\$35,000 - \$65,000

**Operational Improvements:**

- Perform an irrigation audit to check efficiency..... \$500 - \$1,500
- Develop a tree canopy/shade plan to replace trees that are nearing the end of their life span (Replace 5-10 trees)..... \$5,000 - \$9,000

**Proposed Additional Program:**

- Drinking water..... \$4,000 - \$8,000
- Look at branding or donor opportunities..... TBD

*\* For use in funding, prioritization, and budget considerations*





# SIDEWALKS AND TRAILS

## Existing Conditions:

### Observations:

- Majority of residential streets lack sidewalks, ramps, and curb and gutter
- All intersections lack painted crosswalks
- Several sidewalks are 4 ft wide or less
- Many intersections have damaged/broken paving, curbs, or walls
- Several areas have drainage swales making it difficult to navigate as a pedestrian

## Recommendations:

### Accessibility Improvements:

- Ramps at all intersections
- 5 ft wide minimum width walks (6 ft preferred)

### Safety Improvements:

- Painted stop bars and crosswalk markings at key locations

### Operational Improvements:

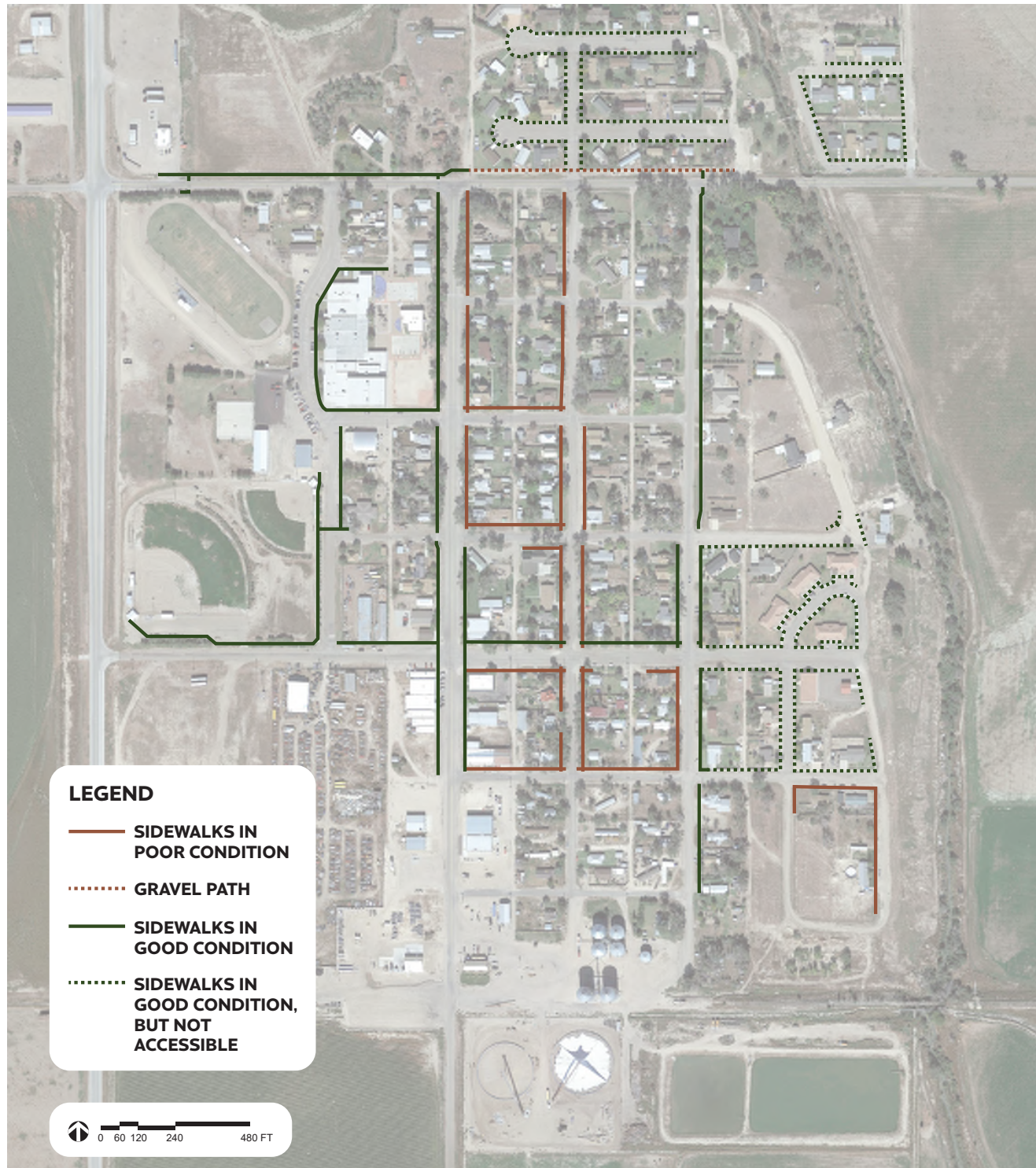
- Repair/replace damaged curbs
- Regrade swales/street crowns to lessen slopes at intersection ramps/crossings

### Additional Recommendations:

- Perform formal sidewalk assessment and inventory plan, with detailed existing conditions documented, and prioritized improvements recommendation



# EXISTING SIDEWALKS



# PRIORITY PEDESTRIAN CONNECTIONS



# SCHOOL CAMPUS

Existing Conditions:	Recommendations:	Rough Order Budget Range*
<p><b>Existing Program:</b></p> <ul style="list-style-type: none"> <li>Baseball field</li> <li>Softball field</li> <li>Practice field</li> <li>Basketball courts</li> <li>Weight room</li> <li>Football field and track</li> <li>Playground</li> </ul>	<p><b>Accessibility Improvements:</b></p> <ul style="list-style-type: none"> <li>Accessible walk 6' wide from parking to existing field bleachers..... \$3,500 - \$6,000</li> </ul> <p><b>Operational Improvements:</b></p> <ul style="list-style-type: none"> <li>Perform campus master plan update..... \$15,000 - \$20,000</li> </ul> <p><b>Proposed Program:</b></p> <ul style="list-style-type: none"> <li>Preschool outdoor learning environments                             <ul style="list-style-type: none"> <li>New play equipment for PreK area.....\$20,000 - \$35,000</li> <li>Wavy walk tricycle/strider bike loop at PreK..... \$12,000 - \$18,000</li> <li>Shade shelter at PreK..... \$20,000 - \$35,000</li> </ul> </li> <li>Pickleball courts.....\$200,000 - \$275,000</li> <li>18-hole disc golf course..... \$25,000 - \$18,000</li> <li>CHSAA 8-lane track and field amenities.....\$250,000 - \$350,000</li> <li>Synthetic Turf Football field.....\$750,000 - \$950,000</li> <li>Sports Lighting.....\$250,000 - \$400,000</li> <li>Synthetic Turf Area at Elementary playground.....\$50,000 - \$65,000</li> </ul>	
<p><b>Observations:</b></p> <ul style="list-style-type: none"> <li>Cinder track not 400m</li> <li>Pressbox and lighting are near end of lifecycle</li> <li>T rack event areas repairs</li> <li>Baseball field was recently re-seeded and establishment looks promising</li> </ul>		

*\* For use in funding, prioritization, and budget considerations*

The school would benefit from an overall athletic field and campus master plan study. This plan could build upon the preliminary conceptual test-fit plan provided here. Programming, future needs, student and faculty driven goals and priorities could establish a framework for a comprehensive vision and funding requirements and potential funding sources.





# EVENT CENTER / Open-Air Arena

Throughout the Public Engagement process, the concept of an outdoor recreational structure that could provide much-needed shade, flexible programming, and regional draw was continually raised by many in the community. Activity stations at the open houses prompted questions such as "Who Do You Recreate in Wiley?" and "Where Do You Recreate in Wiley?" A major theme and takeaway from the respondents was "Ranching, Rodeo, Horseback Riding, Archery etc."

The intent with this plan is to capture the initial ideas and offer a very preliminary, conceptual in nature vision of what the possibilities, opportunities, and high-level considerations for a foundation on which the Town can continue on if this gains traction and continued community support.

A location and/or property was not specifically selected for this concept. General area requirements will be based on specific programming, codes, local jurisdictions etc. The figure shown at-right is intended to be a conceptual visualization, to illustrate potential, generate excitement and support, and leverage funding if the Town does determine to pursue this endeavor.

As noted in the Strategic Partnerships section, this project would likely require additional support and funding from County organizations and surrounding communities. There are also several other existing facilities that could provide opportunities and partnerships.

The goal would be to support these surrounding communities and facilities, not work to compete or detract from their success.

## Recommendations:

## Rough Order Budget Range\*

### Open-Air Pavilion:

- 25,000 SF - Programming for multi-use events, camps .....\$1,000,000 - \$1,250,000  
and functions, ceremonies (graduations etc.) (25,000 SF @ \$40-\$50/SF)
- Offices and meeting rooms
- Horse stalls and practice arena (100' x 200') .....\$20,000 - \$35,000

### Environmental Mitigations:

- Plant vegetation along key edges of the site to create .....\$40,000 - \$60,000  
windbreaks
- Install tennis-style windscreens on prevailing wind .....\$20,000 - \$30,000  
sides of structure

### Operational Considerations:

(not identified here, further evaluation is recommended)

- Work with leaders and managers of similar scale event arenas to develop best practices and management plans, partnering opportunities and marketing strategies.
- Identify potential facility management companies, sponsorships, owners and partners.
- Maintenance plans, financial feasibility and market studies.

\* For use in funding, prioritization, and budget considerations

Selected examples of similar scope and scale for reference only:

Mustang Pavilion and Education , Kim, CO  
[www.mustangpavilion.com](http://www.mustangpavilion.com)

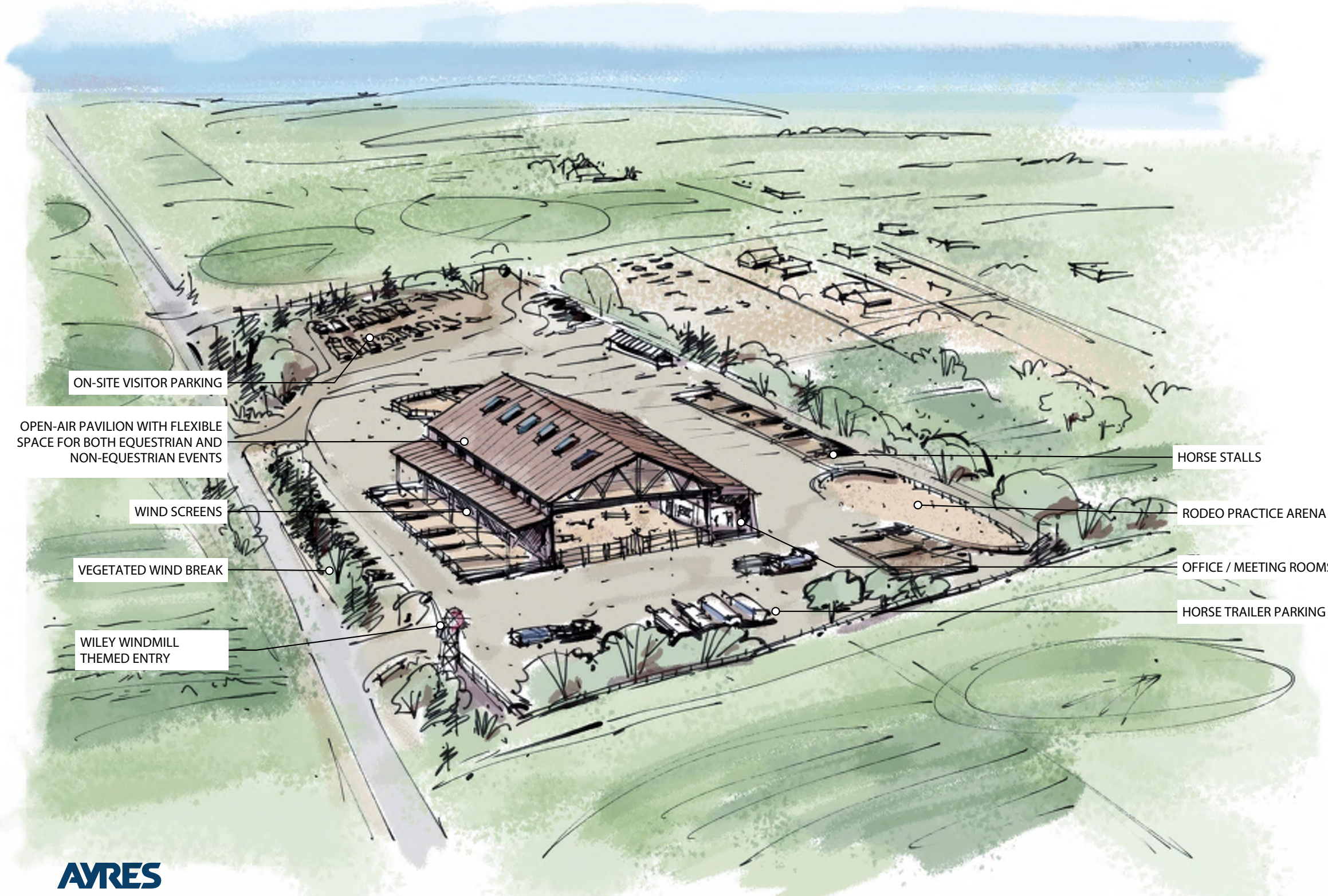
Double Check Area, Eaton, CO



image source: [www.mustangpavilion.com](http://www.mustangpavilion.com)



image source: [www.facebook.com/DoubleCheckArena](https://www.facebook.com/DoubleCheckArena)



**AYRES**

## EVENT AREA - CONCEPTUAL VISUALIZATION

06/07/2023

*This page intentionally left blank.*



SECTION  
**05**

# FUNDING STRATEGIES



*This page intentionally left blank.*

---

# GRANT OPTIONS

---

Some grant programs with potential funding for the Town of Wiley include:

## Safe Routes and Trails:

---

- 1. US DOT Safe Streets and Roads for All (SS4A)**  
*Website:* <https://www.transportation.gov/grants/SS4A>
- 2. US DOT Healthy Streets Program**  
*Website:*
- 3. US DOT Rebuilding American Infrastructure Sustainably and Equitably (RAISE) Grants**  
*Website:* <https://www.transportation.gov/RAISEgrants>
- 4. CDOT Safe Routes to School**  
*Website:* <https://www.codot.gov/programs/bikeped/saferoutes>
- 5. FHWA - Recreational Trails Program**  
*Website:* [https://www.fhwa.dot.gov/environment/recreational\\_trails/](https://www.fhwa.dot.gov/environment/recreational_trails/)
- 6. National Parks Service: Rivers and Trails Conservation Assistance Program**  
*Website:* <https://www.nps.gov/orgs/rtca/index.htm>
- 7. FHWA - Bicycle and Pedestrian Program**  
*Website:* [https://www.fhwa.dot.gov/environment/bicycle\\_pedestrian/](https://www.fhwa.dot.gov/environment/bicycle_pedestrian/)

## Brownfield Planning:

---

- 1. Colorado CDPHE Brownfields**  
*Website:* <https://cdphe.colorado.gov/brownfields>

## Sports and Recreation:

---

- 1. US EPA Recreation Economy for Rural Communities**  
*Website:* <https://www.epa.gov/smartgrowth/recreation-economy-rural-communities>
- 2. NFL Foundation Grassroots Field Grant Program**  
*Website:* <https://www.nflfoundation.org/grassroots>
- 3. Denver Broncos**  
*Website:* <https://www.denverbroncos.com/community/partnerships/grants/>
- 4. Daniels Fund**  
*Website:* <https://www.danielsfund.org/grants/funding-areas/sports>

*This page intentionally left blank.*



SECTION  
**06**

# NEXT STEPS



*This page intentionally left blank.*

---

# ADDITIONAL PLANNING/STUDIES

---

## TOWN COMPREHENSIVE PLAN

The Town should consider pursuing a grant to develop a Comprehensive Plan that would establish and promote the Town's vision, goals, and policies over the next five to ten years. The comprehensive plan helps guide community investment and strategies in areas such as recreation and tourism, economic development, land use, parks and open space, transportation, and capital improvements. The Department of Local Affairs (DOLA) provides grant programs and resources that the Town could use to begin the process. It is important that the comprehensive planning process and approach should be tailored to the Town of Wiley based on regional context and community character.

## SIDEWALK INVENTORY AND ANALYSIS PLAN

As mentioned earlier in this report, our team recommends that the town work with an engineering consultant to develop a formal detailed sidewalk assessment. This report should include a field survey or drone fly through to collect enough topographic and existing conditions data to perform the following inventory and assessments

1. Provide an inventory of existing sidewalks in a digital format.
2. Provide a conditions rating for all sidewalks, paths, and trails.
3. Provide spreadsheet of recommended improvements
4. Develop order of magnitude costs for the recommendations
5. Work with the community to prioritize phases for development.

Some preliminary efforts to frame this discussion are included in this report but more detailed information will be needed to move forward with this extensive infrastructural work.

## SCHOOL CAMPUS & ATHLETIC FIELDS MASTER PLAN

We recommend that the town develop a specific and detailed master plan for the school campus and the recreational and athletic elements provided there. The entire community uses these facilities and it is clear that much of the current recreation energy is based on this site. It would likely not make sense, for instance, to have a park soccer field and then another at the school. The overlap of civic and educational infrastructure is very important in this community. This may make for some challenges in the grant writing sphere however it will likely be worth looking in to. Economic and maintenance resources are limited and we recommend that the town and school district work together at these site to get the best bang for the buck for the overall community.